



Laminating for Digital printing On-demand bookbinding

# PIONEER-5000 Series

Laminating Speed : 40m/min  
Feeding & Bursting Speed : 6,000Sheet/hrs  
MAX. Paper Size : 500(W)\*700(L)mm

- ▷ PIONEER-5000 G20N
- ▷ PIONEER-5000 G20R15
- ▷ PIONEER-5000 G20F50
- ▷ PIONEER-5000 G20N-ST50
- ▷ PIONEER-5000 G20R15-ST50
- ▷ PIONEER-5000 DUAL G20N
- ▷ PIONEER-5000 DUAL G20R15
- ▷ PIONEER-5000 DUAL G20F50
- ▷ PIONEER-5000 DUAL G20N-ST50
- ▷ PIONEER-5000 DUAL G20R15-ST50

## ※GMP Thermalami Patented

▶ Scratch-Free Matt Film

▶ Embossing Textured Laminating Film

Laminator installed with Embossing Roller

Heat Pressing & Embossing for Thermalami

Index

- G20= GMP Stream Feeder 20
- N= Nicking Knife
- ST= Auto Stacker
- R15= Rotary Knife 15
- F50= Flying Knife 50



**Electric Induction Heating Roller System**  
Precise Temperature Control ( $\pm 1^{\circ}\text{C}$ )  
Speedy Heating-Up  
Long Life



POLYNEX Film

- Environmental-Friendly "Thermalami" System that no needs adhesive.
- This laminating is where the chroma of a coupler is superior without any bubble.
- Laminating system for digital On-demand publishing system
- Perfect solution for all range of on-demand digital printing system
- Suitable for massive operation (Laminating Speed : Max. 40m/min)
- Full automatic laminating system (Feeding, Laminating, Cutting)
- Small and Medium volume work available by jogging table (Option)
- Best Reliable & Durable by PLC and servo control system
- Economic price



JOGGING Table

**PIONEER-5000 Series**

www.gmp.com



KOSDAQ Registered Corporation( NO. 018290)





# PIONEER-5000 Series

## Jogging Table-Option

- Automatically Jogs the finished output for easy pallet loading



- \* Model : Jogging Table-700
- \* Out-put Height : 130mm
- \* Paper Size(MAX): 700x700mm
- \* Dimensions(WxLxH) : 795 x 820 x 410~545mm
- \* Power Requirements : AC 220V, 60Hz

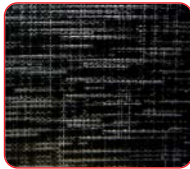


## Type of embossing patterns

- ▶ Various types of embossing offer high quality and capacity on demand



• Linen Texture



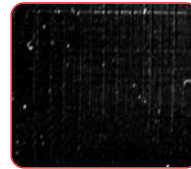
• Fine Texture



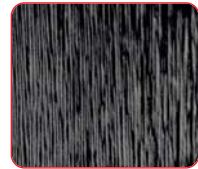
• Leather



• Sparkler



• Silky Texture



• Hair Line

## Thermalami Film

- GMP POLYNEX (OPP Base Thermalami Film)

POLYNEX Thermal Gloss - 20	ECONOMIC Gloss Film
POLYNEX Thermal Gloss - 25	Gloss Film
POLYNEX Thermal Pure Gloss - 20	Pure Gloss Film
POLYNEX Thermal Matt - 22	ECONOMIC Matt Film
POLYNEX Thermal Matt - 28	Matt Film
POLYNEX Thermal Pure Matt - 22	Pure Matt Film
POLYNEX Thermal Gloss Emboright - 40	Embossing & High gloss Film
POLYNEX Thermal Matt Antiscuff - 31	Scuff-free matt Film
POLYNEX Thermal Gloss Digital Supermelt - 40	Digital Print Supermelt Gloss Film
POLYNEX Thermal Matt Digital Supermelt - 43	Digital Print Supermelt Matt Film
POLYNEX Thermal Hologram - 40	Hologram Film
POLYNEX Thermal Silver Gloss - 40	Silver Color film for Embossing Laminating

- GMP NYLONEX (Nylon Base Thermalami Film)

NYLONEX Gloss - 27	Curl & Scratch Free Gloss Film
NYLONEX Matt - 31	Curl & Scratch Free Matt Film
NYLONEX Gloss Digital Supermelt - 40	Curl & Scratch Free Gloss Film for Digital Print
NYLONEX Matt Digital Supermelt - 44	Curl & Scratch Free Matt Film for Digital Print

- GMP PERFEX (OPP Base Thermalami Film)

PERFEX Gloss - 25	Gloss Film
PERFEX Gloss - 38	High gloss & Deep Image Film
PERFEX Matt - 32	Matt Film
PERFEX Matt - 38	Deep image Matt film
PERFEX Sliver - 25	High gloss Silver Film

- \* PERFEX Film for Sliver, Gold & UV printing



## Specifications

Model Name	PIONEER-5000 Series		
Laminator Dimensions	1,300(W)*3,000(L)*1,340(H)mm	Max. Laminating Temperature	140℃
Max. Laminating Speed	40m/min	Temperature Control	PID Control
Max. Feeding Speed	6,000 sheet/hr	Operating System	Siemens PLC (Programmable Logic Controller)
Max. Sheet Format	500(W)*700(L)mm	Main Driving	Siemens 2.2kw Induction Motor with Servo Driver
Min. Sheet Format	210(W)*250(L)mm	Feeder Driving	Siemens 0.4kw Servo Motor with Servo Driver
Laminating Film	POLYNEX, NYLONEX, PERFEX	Nip Pressure	Pneumatic Cylinder
Thickness of Substrate(Paper)	120~400g/ m <sup>2</sup>	Film Core	Air Shaft (3")
Feeder Loading Height	480mm	Cooling System	Air cooling with Blower
Power Requirements	AC 380~400V, 3N, 50/60Hz	Feeding	GMP Syncro Stream Feeder
Power Consumption	13 kw	Cutting	Burst Cutting with Nicking Knife and Perforator
Warm up Time	10min	Weight	1,100kg
Heating System	Induction Heating System		

GMP reserves the right to after change specifications without prior notice.